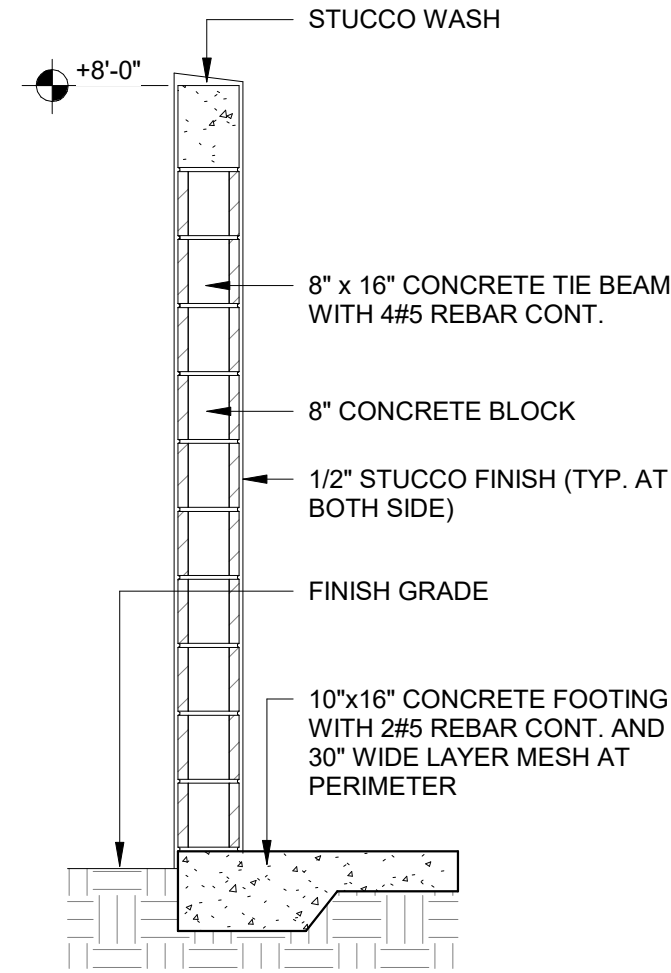
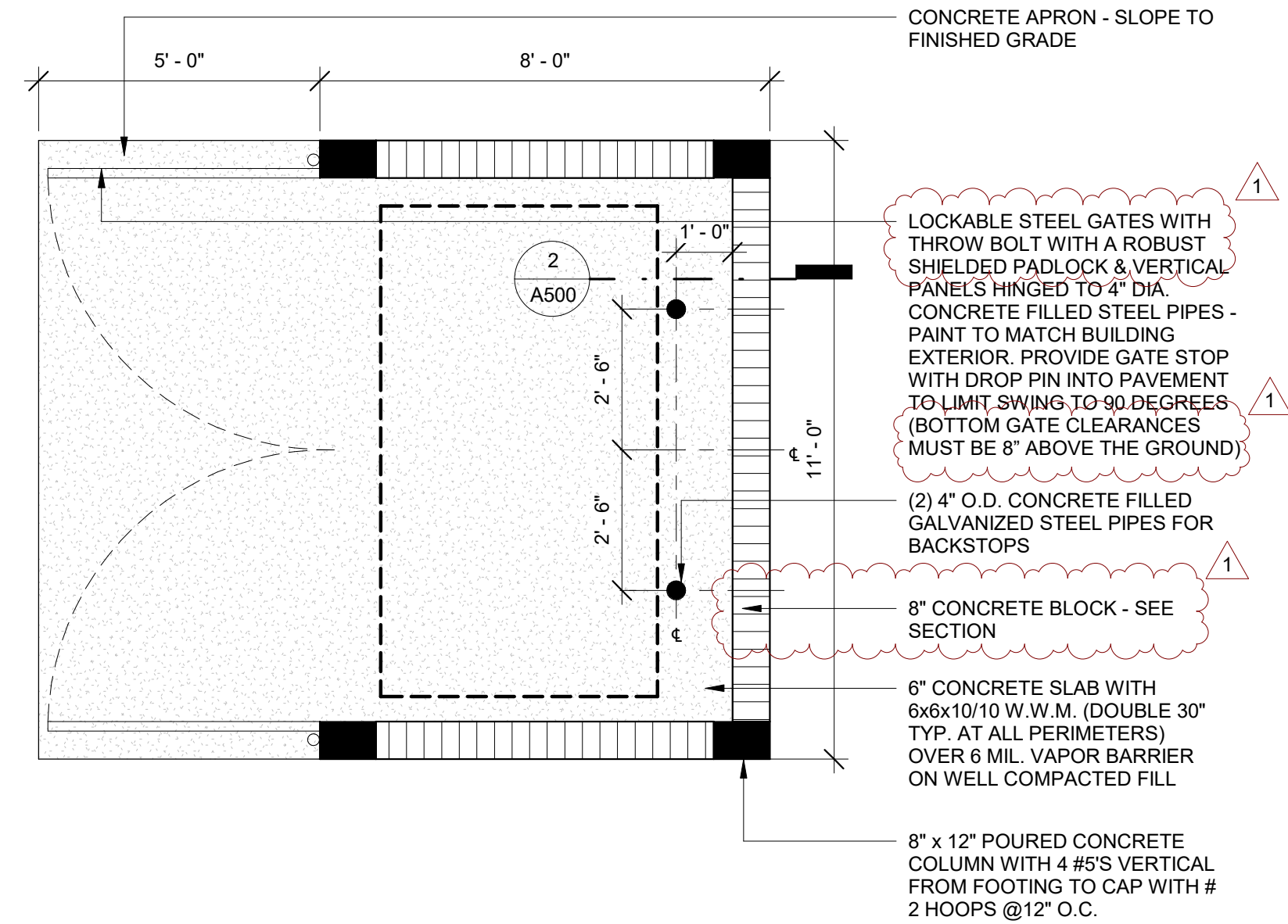


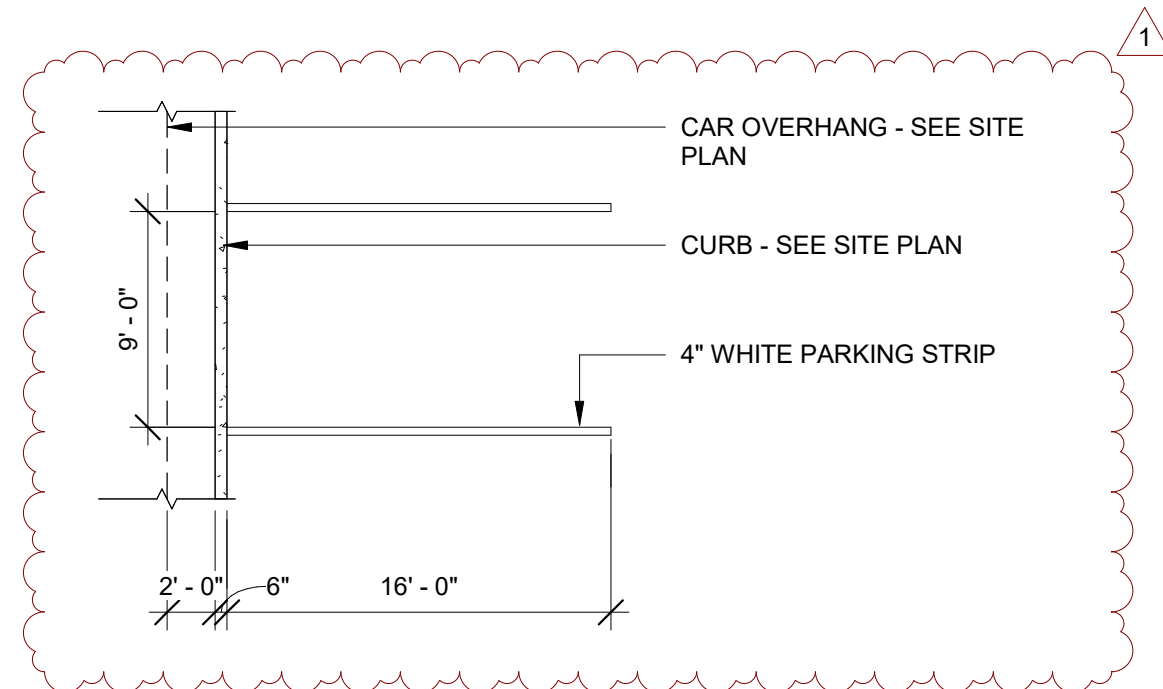
3 SPECIALTIES - FIRE EXTINGUISHER MOUNTING DETAIL
3/4" = 1'-0"



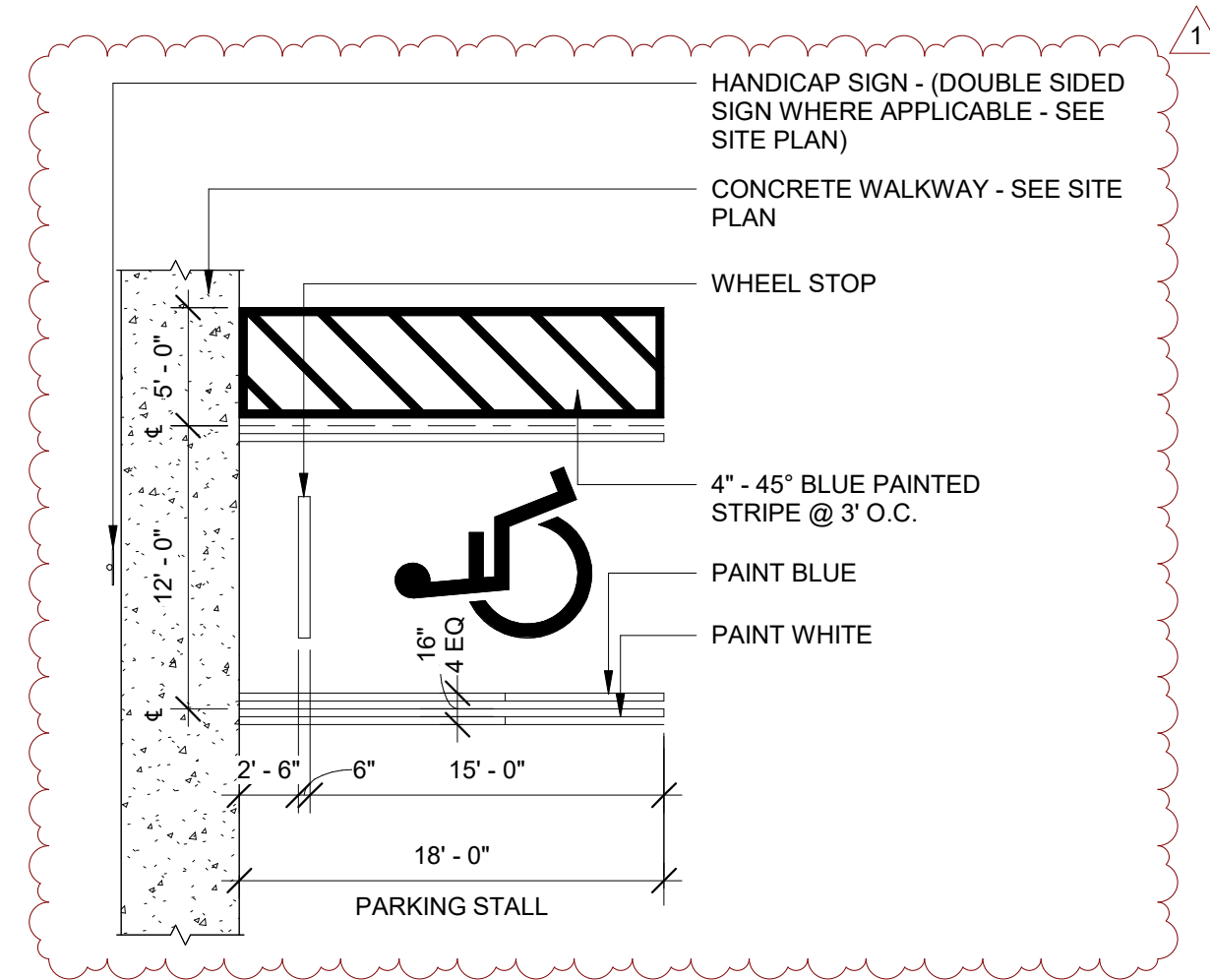
2 DUMPSTER ENCLOSURE SECTION
1/2" = 1'-0"



1 DUMPSTER ENCLOSURE PLAN
3/8" = 1'-0"



5 TYPICAL PARKING
1/8" = 1'-0"

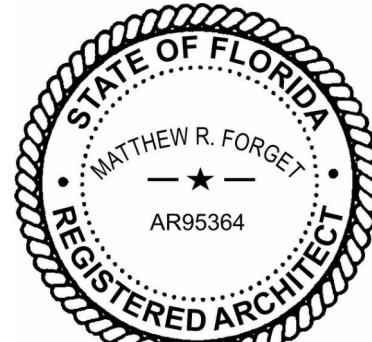


4 TYPICAL HANDICAP PARKING
1/8" = 1'-0"



S ARCHITECTURE
33 SE 4TH STREET, SUITE 100
BOCA RATON, FL 33432
561.835.5515
WWW.SARCHITECTURE.COM
AA26003746

SEAL:



MATTHEW R. FORGET // REG. FL. NO. AR95364

DIGITAL SIGNATURE:

CLIENT / PROJECT ADDRESS:

HODGE MARINE

1857 NW 21ST STREET
POMPANO BEACH, FLORIDA 33069

REVISIONS:

NO.	DATE	DESCRIPTION
1	2025-06-12	DRC PLAN REVIEW

KEY PLAN:

PROJECT NUMBER: 24-057

DATE ISSUED: 2025-06-30

SHEET TITLE:

DETAILS - BUILDING

SHEET NO:

A500

SITE PLAN APPROVAL

\\Baker-Docs\7\Projects\2025\24-057_Hodge Marine_205.rvt

2025.6.11.12

PZ25-12000024

09/17/2025

DRC